

PART OF N. 1/2 OF SEC. 18, T.6N., R.2E., S.L.B. & M.

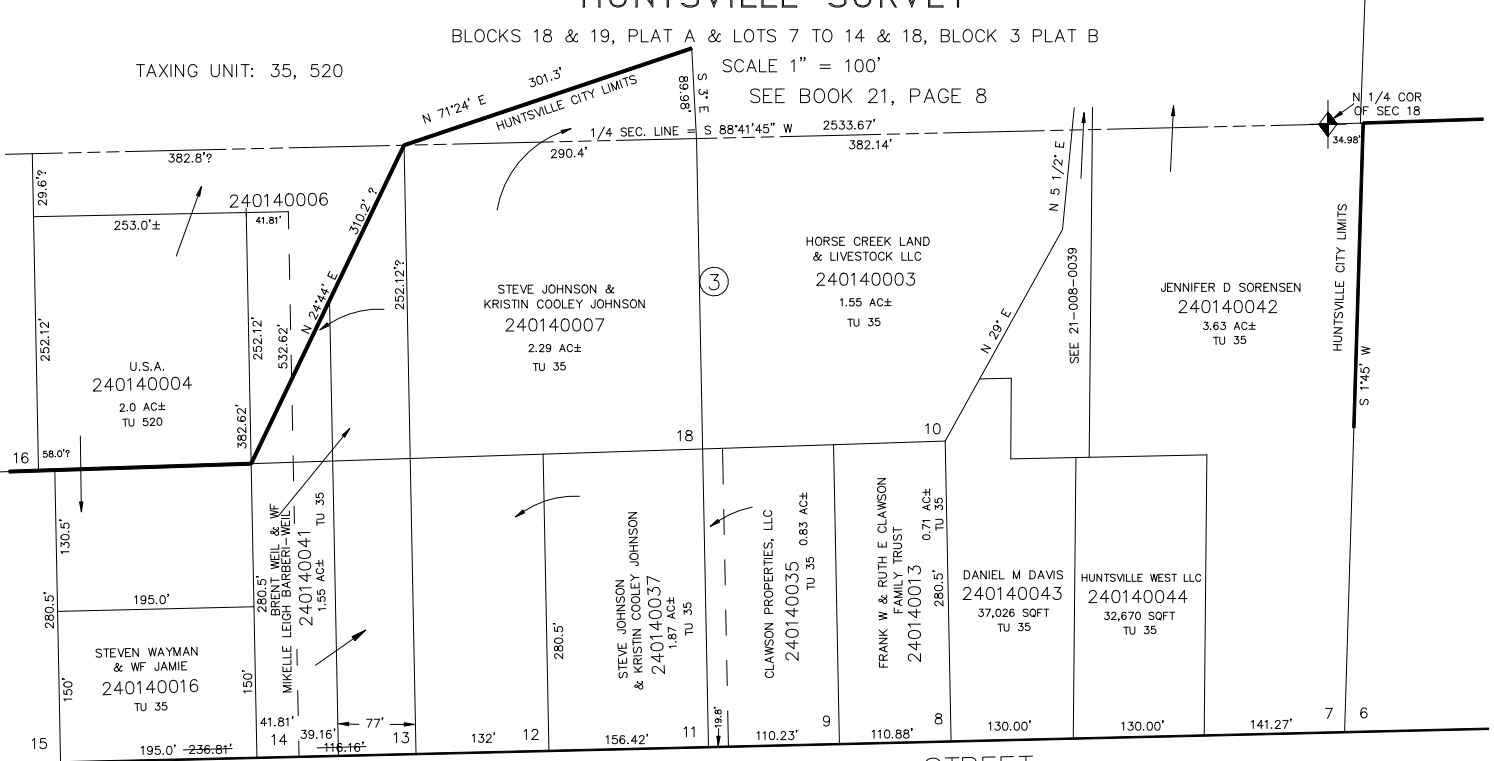
# HUNTSVILLE SURVEY

BLOCKS 18 & 19, PLAT A & LOTS 7 TO 14 & 18, BLOCK 3 PLAT B

TAXING UNIT: 35, 520

SCALE 1" = 100'

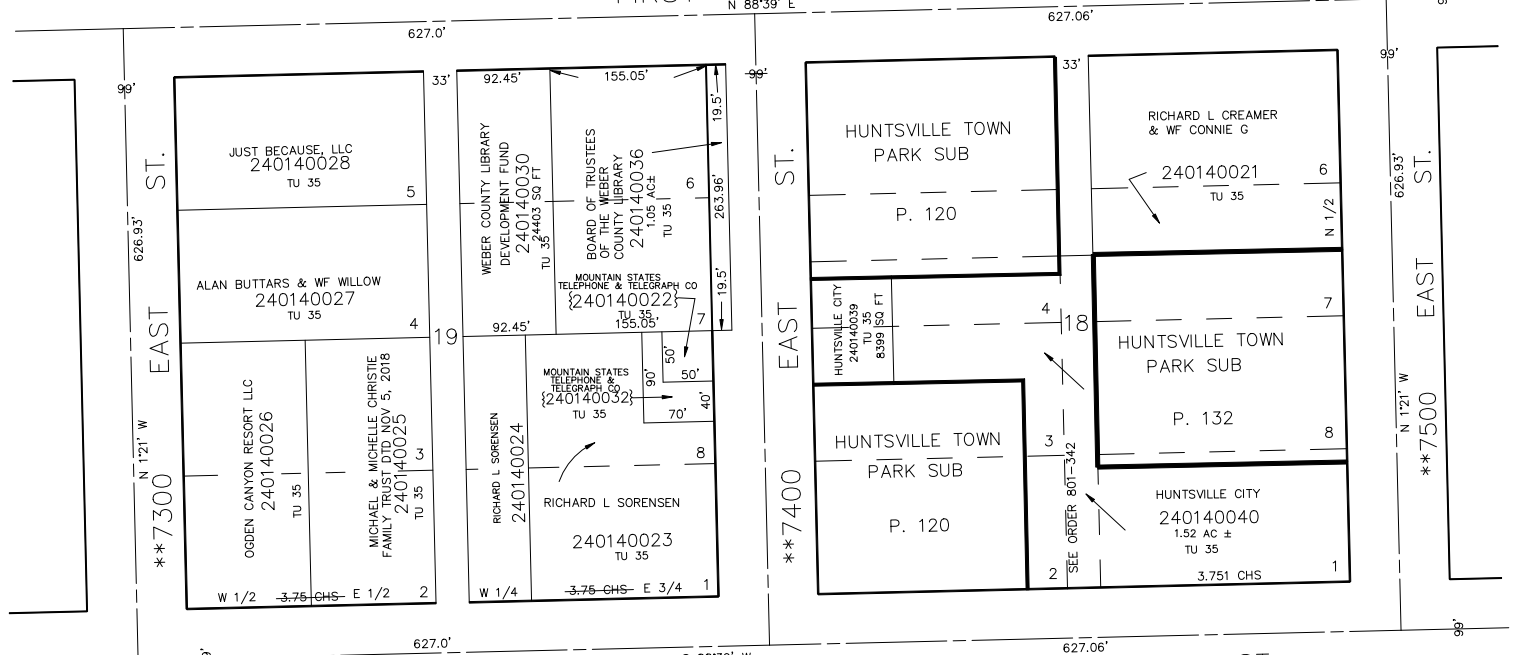
SEE BOOK 21, PAGE 8



\*\*FIRST STREET

SEE PAGE 15

SEE PAGE 13



\*\*200

EAST ST. 7400

EAST ST. 7300

EAST ST. 7500

SOUTH ST.

\*\*SEE STREET NAME CHANGE E#2195484

\*NOTE STREET NUMBERS ACCORDING TO COUNTY SURVEYOR